



THE WOODLANDS

EXPLORE THE WORLD OF CONCRETE HOMES

USA is dedicated to creating beautifully and creatively designed, sustainable, energy efficient, affordable, durable, and safe homes that give many more Americans a shot at homeownership. Inspired by extensive architectural and engineering work, our goal is to provide buildings that are more than houses – our concrete insulated homes are designed to be homes that will last decades with minimal maintenance and make homeownership more affordable. These homes are modern yet timeless.

COMFORT AND COMMUNITY

The ranch-style house is noted for its long, close-to-the-ground profile, and wide open layout. The style fused modernist ideas and styles with notions of the American Western period of wide open spaces to create a very informal and casual living style. By the 1950s, Ranch homes accounted for nine out of every 10 new homes in America, and today it remains a national favorite with 34 states naming Ranch homes their most popular style. The Woodlands does not disappoint. It offers easy exterior maintenance with a low-pitch roofline, no stairs to climb, and it is great for entertaining.



THE WOODLANDS INTERIORS

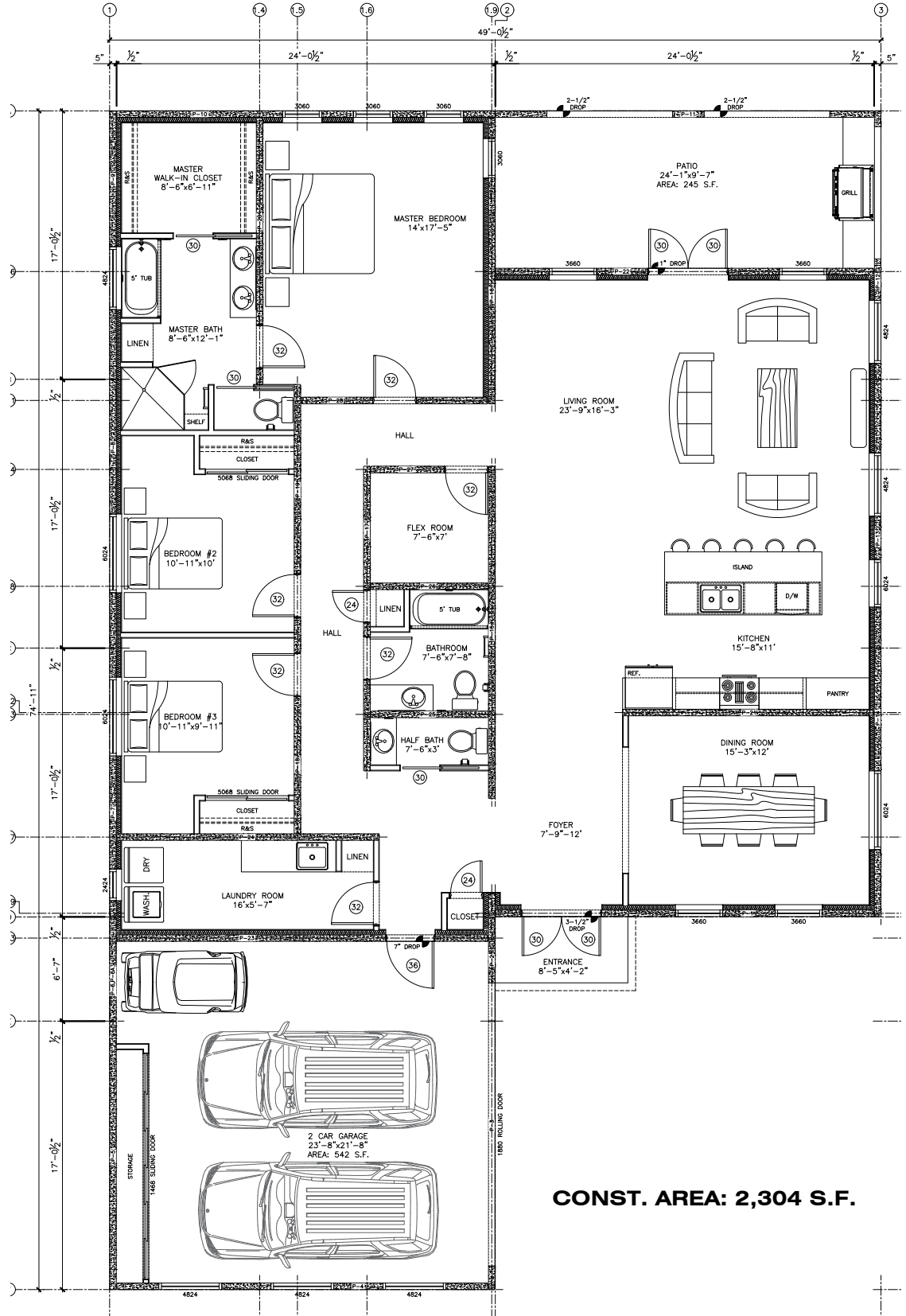


SINGLE FAMILY HOME

LAYOUT

THE WOODLANDS
 LIVING AREA: 2,542 SF
 GARAGE: 440 SF

BEDROOMS: 3
 BATHROOMS: 3
 GARAGE: 2-Car



CONST. AREA: 2,304 S.F.